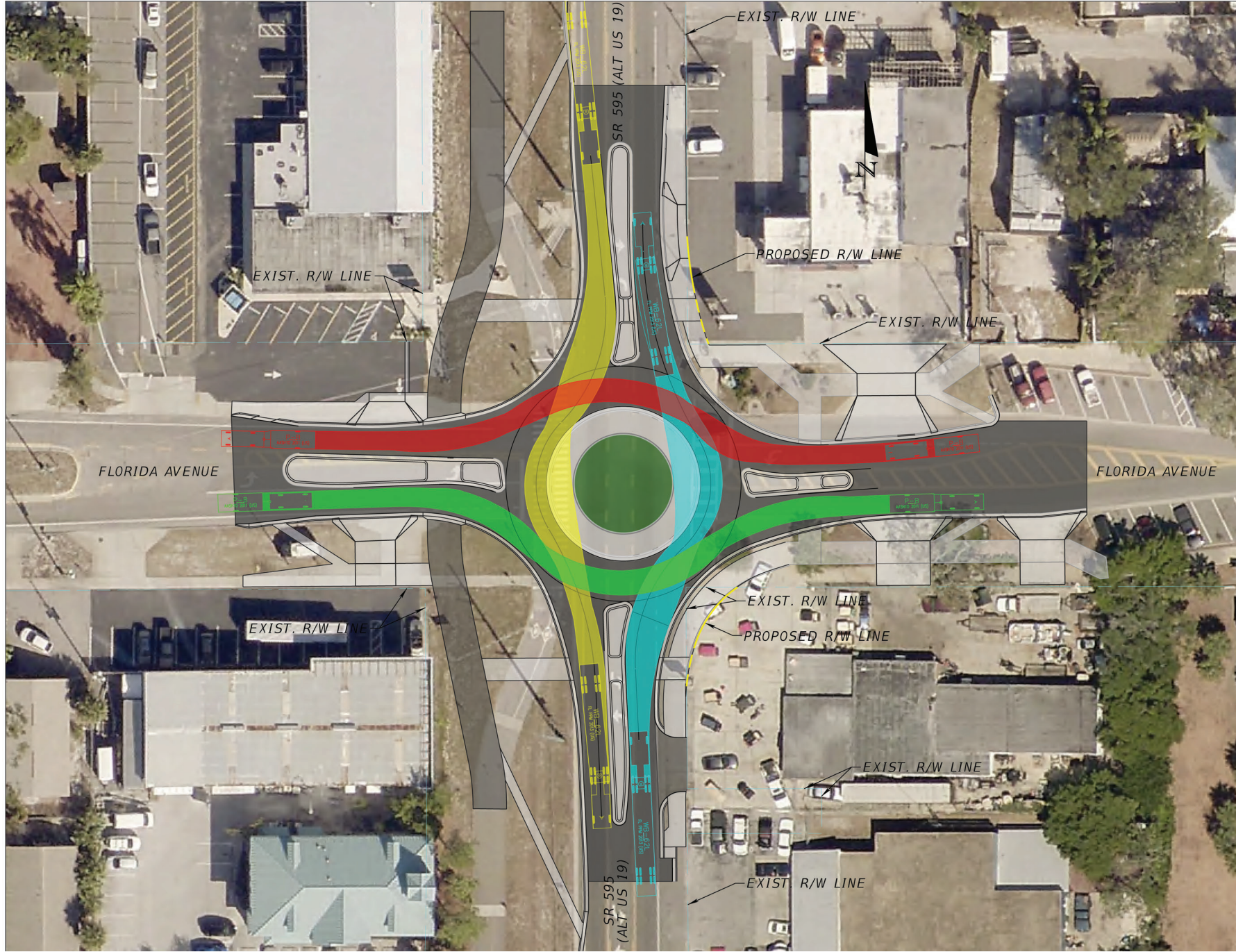
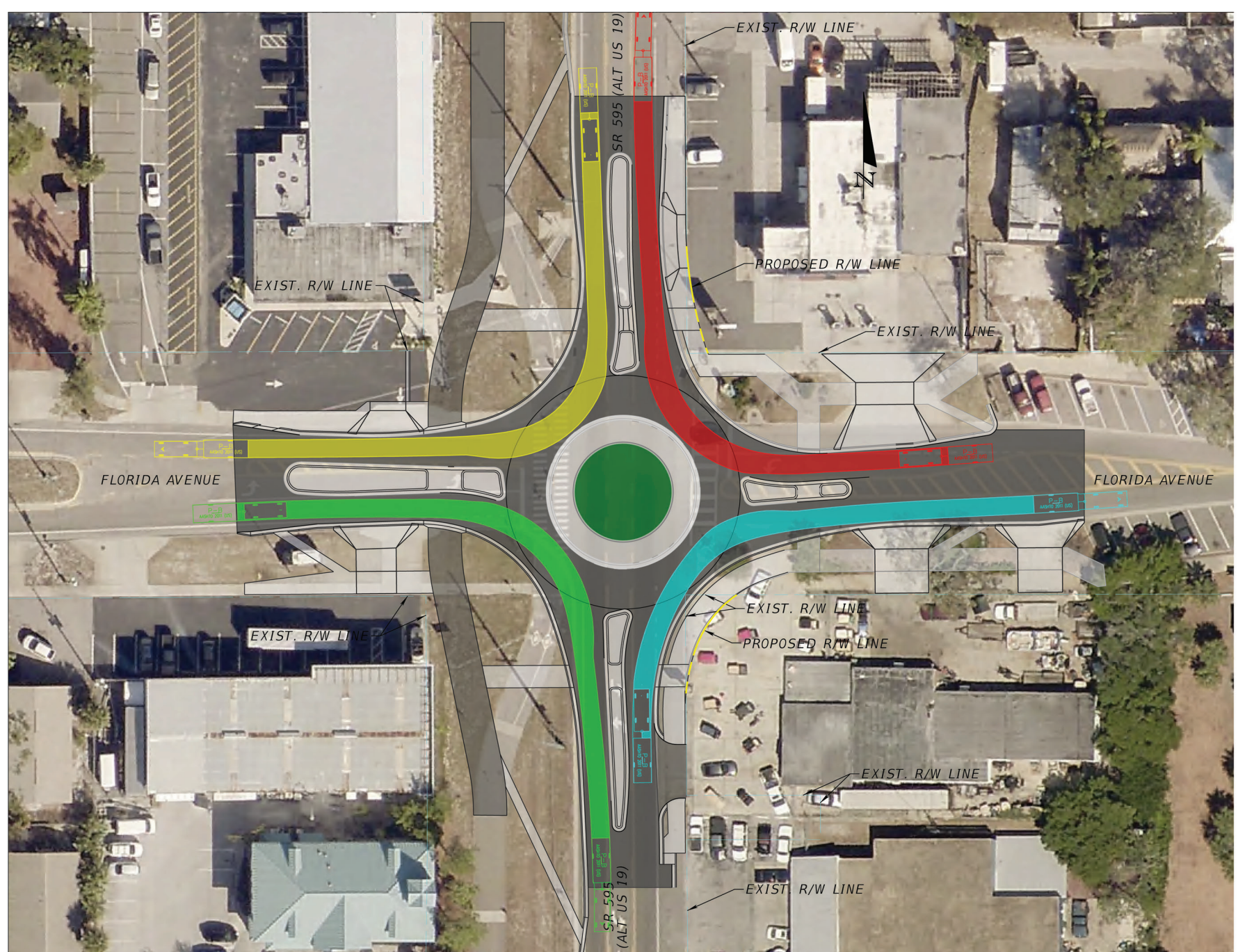


ADDITIONAL INFORMATION & COMMON CONCERNS

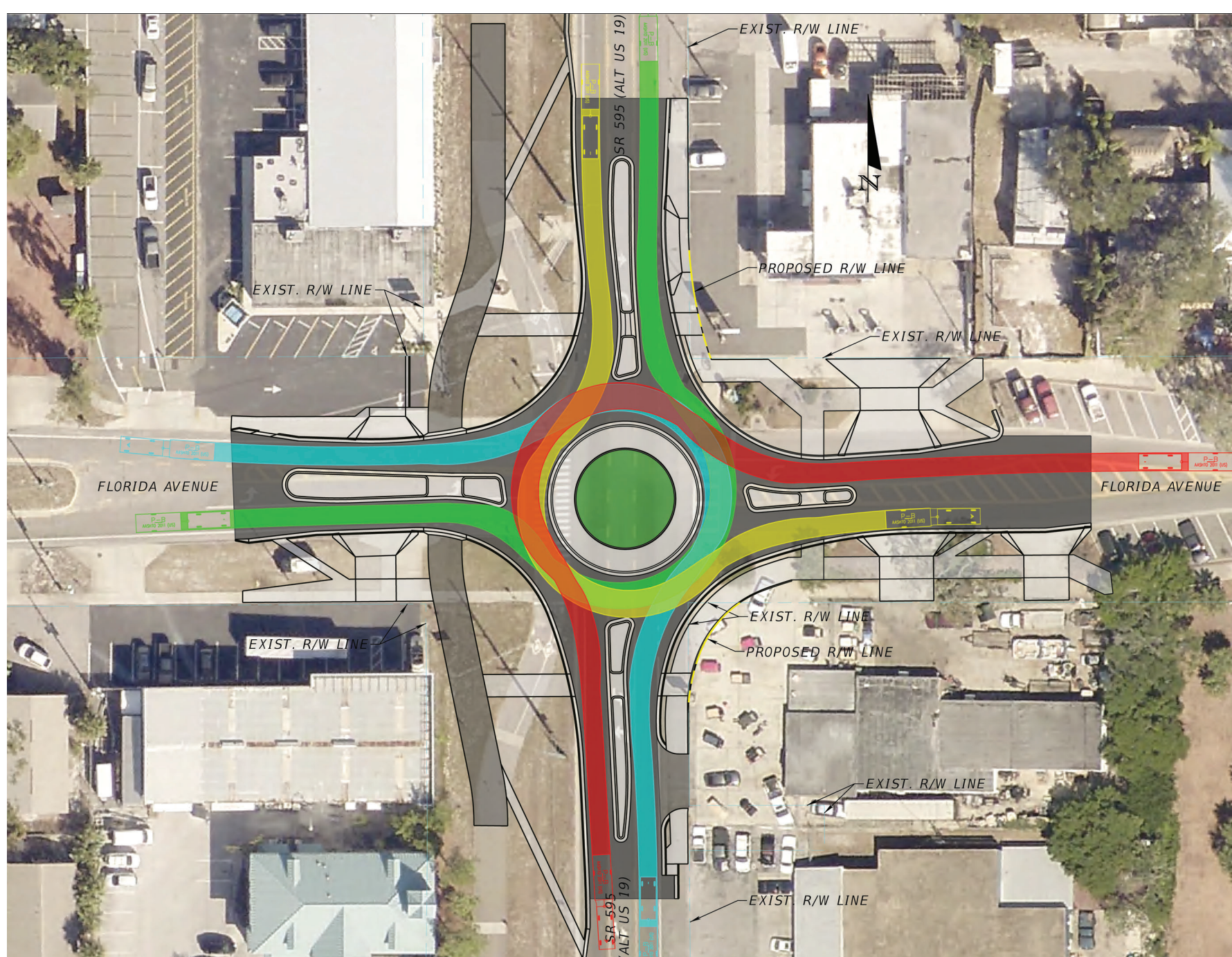
ROUNDBABOUT VEHICLE SIZE ACCOMODATION





THROUGH MOVEMENTS
(Alt US 19: WB-62FL; Florida Ave: Car & Trailer)

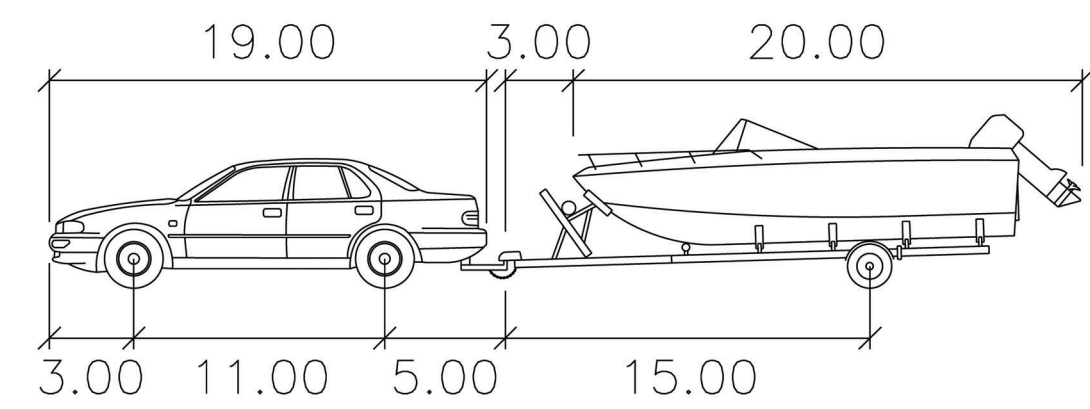


RIGHT TURNS
(Alt US 19 & Florida Ave: Car & Trailer)

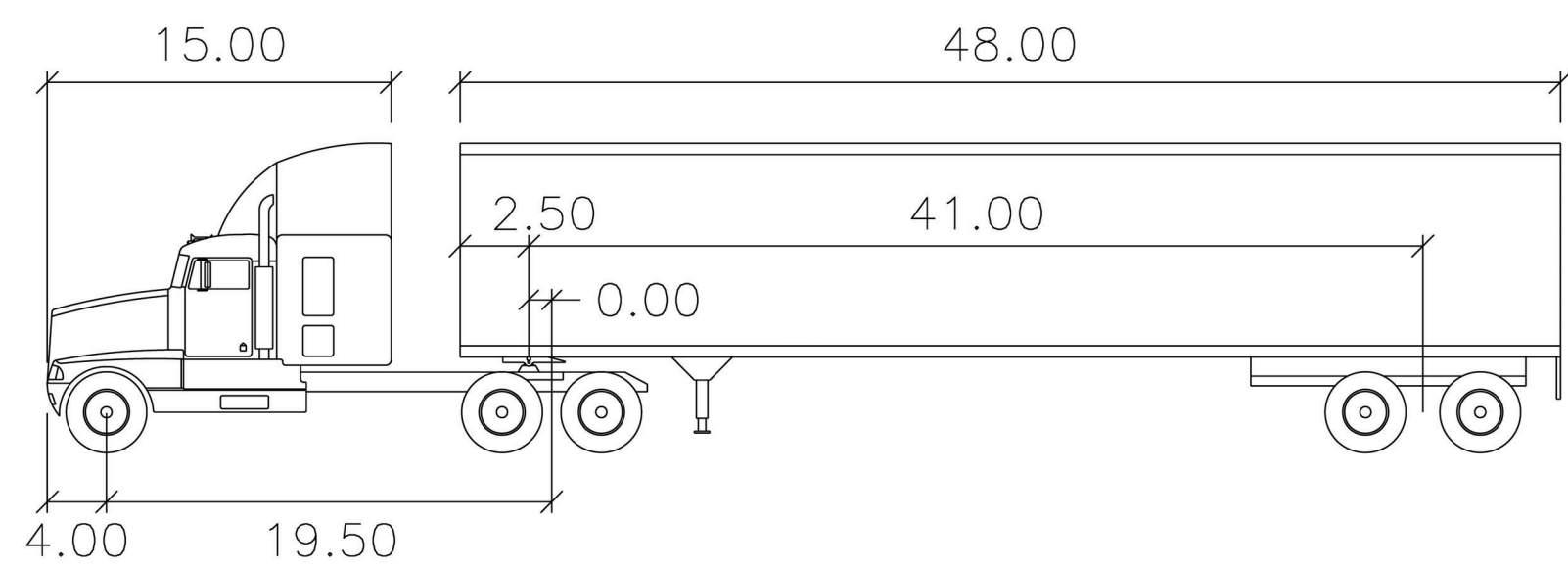


LEFT TURNS
(Alt US 19 & Florida Ave: Car & Trailer)

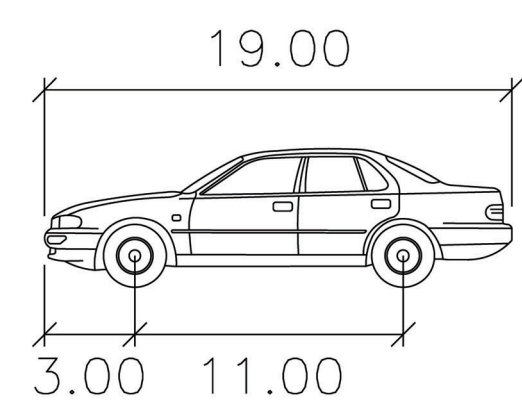
Vehicle	Will it Fit?	
	Through Travel 	Left & Right Turns 
Car	Yes	Yes
Motorhome	Yes	Yes
Bus	Yes	Yes
Car & Boat Trailer	Yes	Yes
Semi-Truck & Trailer WB-62 / WB-62FL	Yes	No



P-B	feet
Car Width	: 7.00
Trailer Width	: 8.00
Car Track	: 6.00
Trailer Track	: 8.00



WB-62	feet
Tractor Width	: 8.00
Trailer Width	: 8.50
Tractor Track	: 8.00
Trailer Track	: 8.50



Car	feet
Width	: 7.00
Track	: 6.00

ALT US 19 & FLORIDA AVENUE CRASH HISTORY

Crash Type & Count for Alt US 19 and Florida Avenue (2012 – 2016)						
Collision Type	2012	2013	2014	2015	2016	Total
Rear End	1	1	0	0	0	2
Angle / Left Turns	3	2	0	1	3	9
Sideswipe	0	0	0	0	0	0
Pedestrian/Bicycle	0	0	0	0	0	0
Total	4	3	0	1	3	11
Injury & Condition Data						
	2012	2013	2014	2015	2016	Total
Fatal Crashes	0	0	0	0	0	0
Injury Crashes	4	1	0	0	3	8
Property Damage Only	1	2	0	0	0	3
Day	2	3	0	1	2	8
Night	2	0	0	0	1	3

Crashes are correctable with roundabout

