



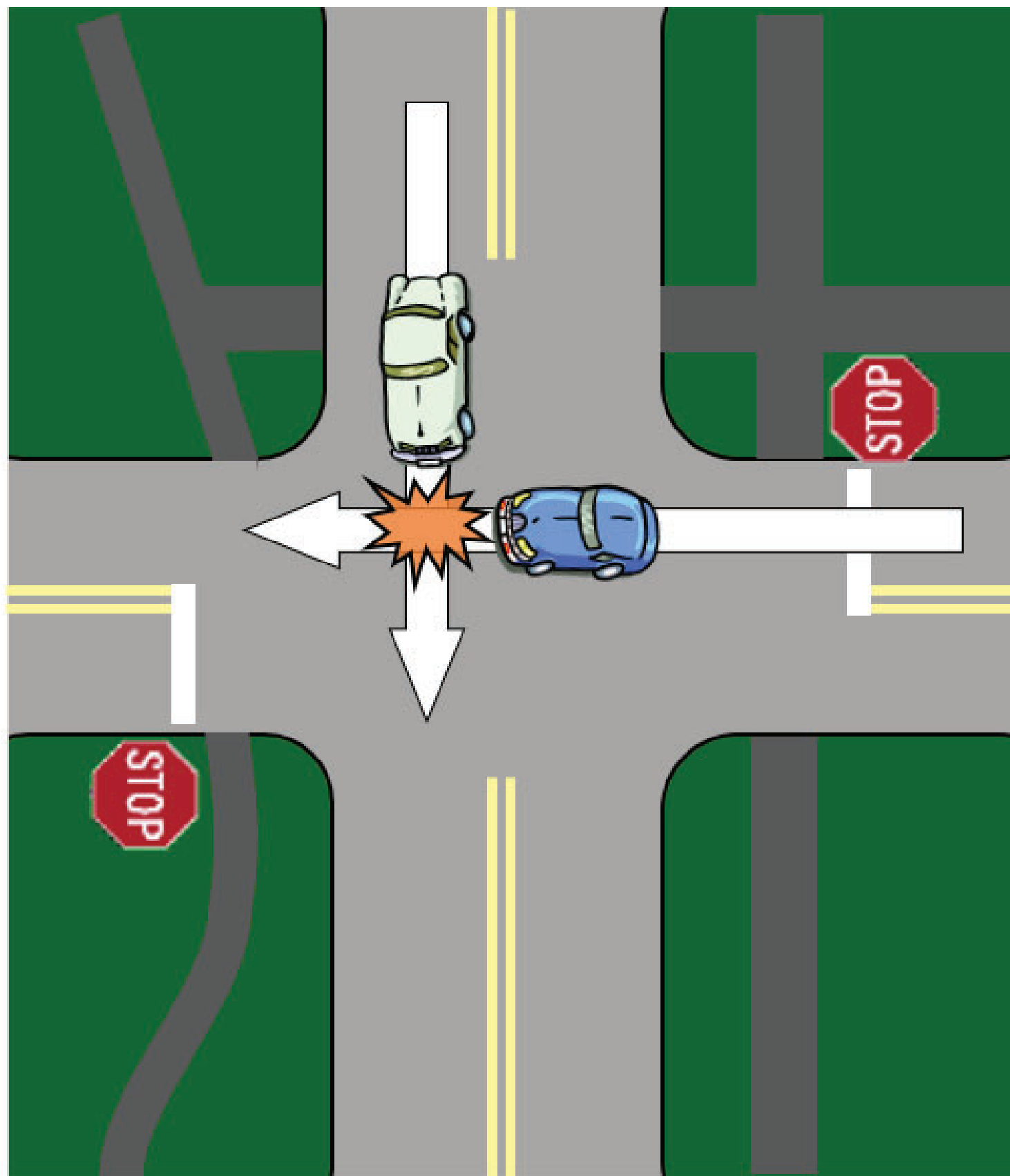
MOTORIST SAFETY



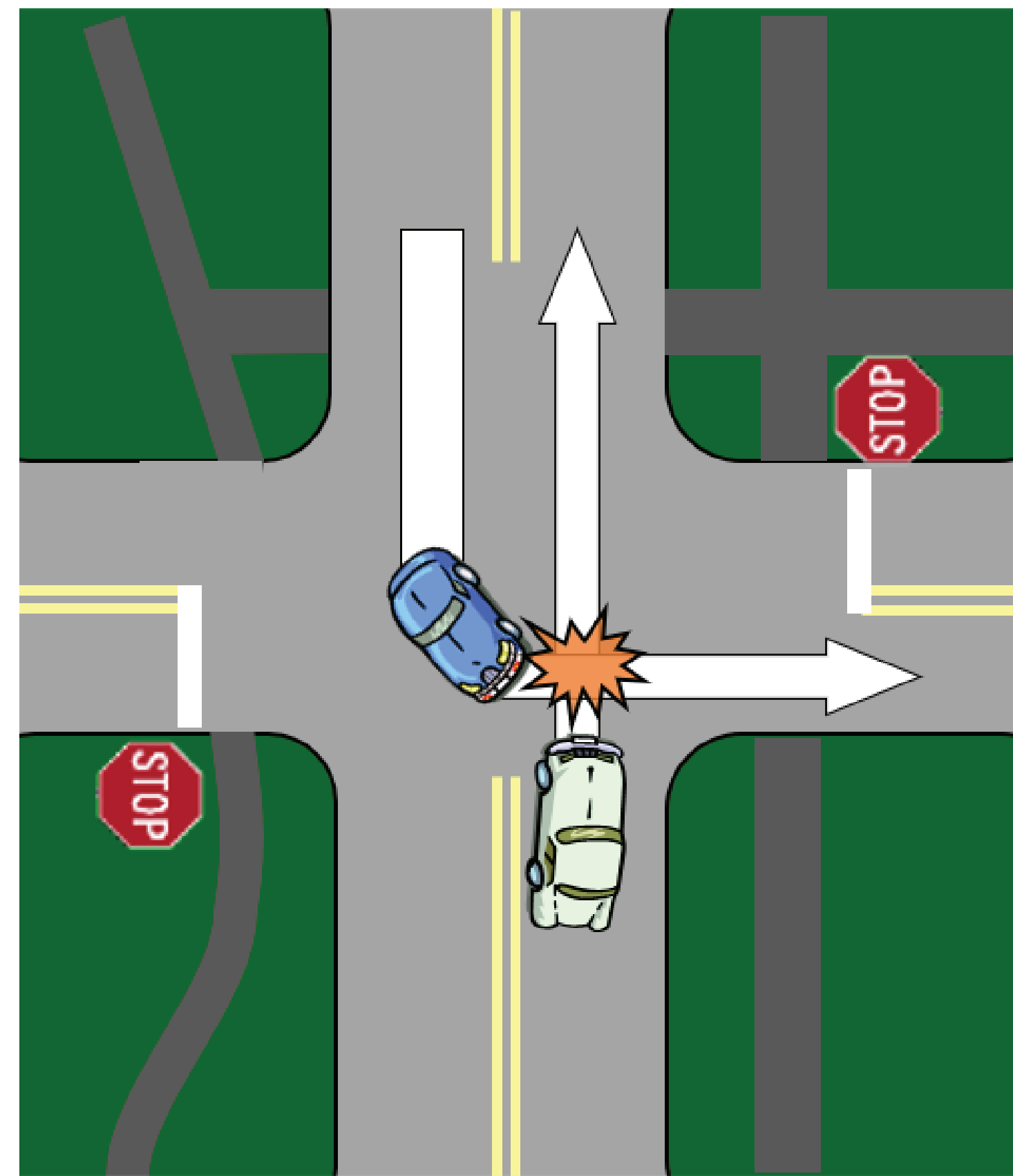
IMPROVEMENT OPTIONS → FEWER SERIOUS CRASHES

TWO-WAY STOP CONTROLLED

Greatest potential harm is from “angle” and “left turn” crashes



ANGLE CRASH

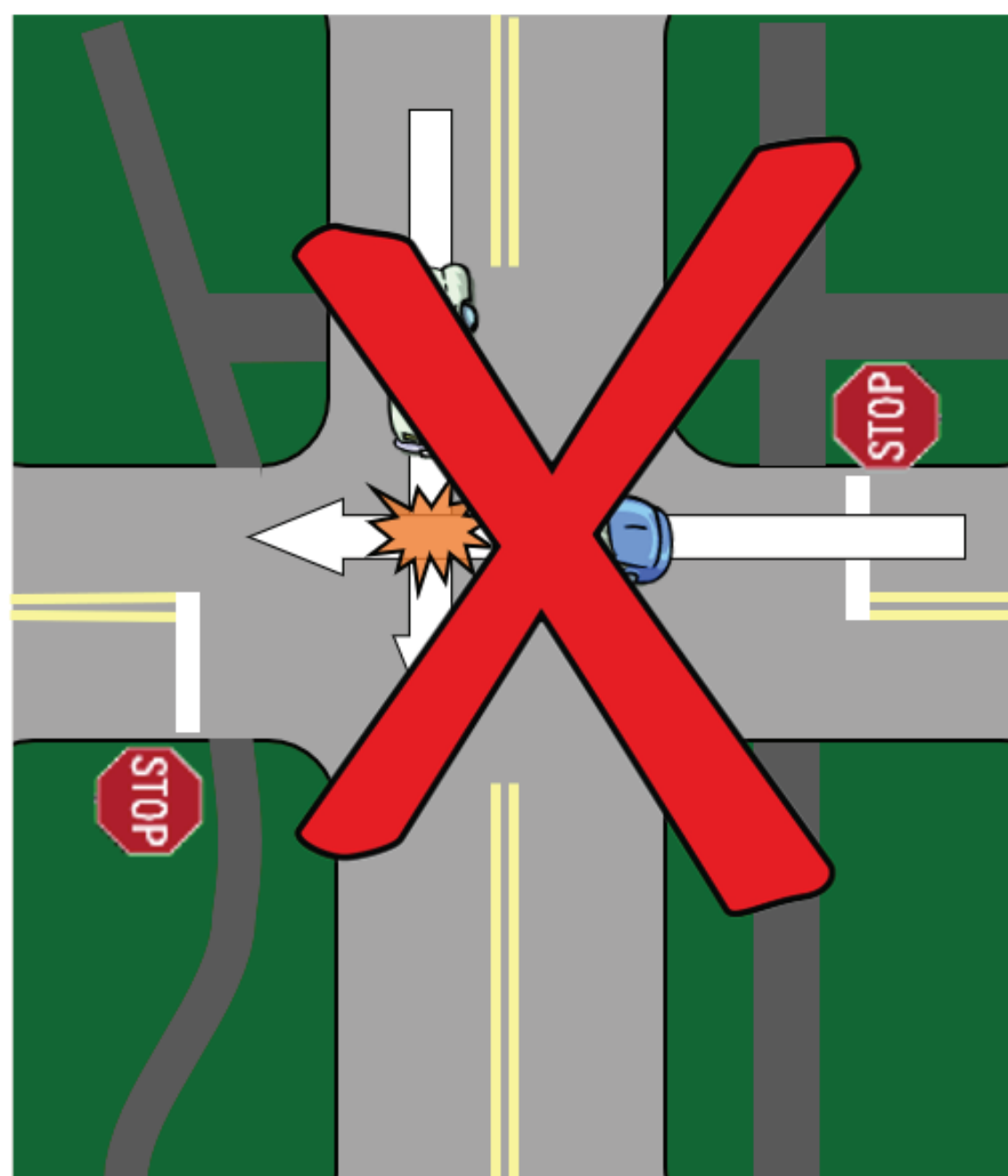


LEFT TURN CRASH

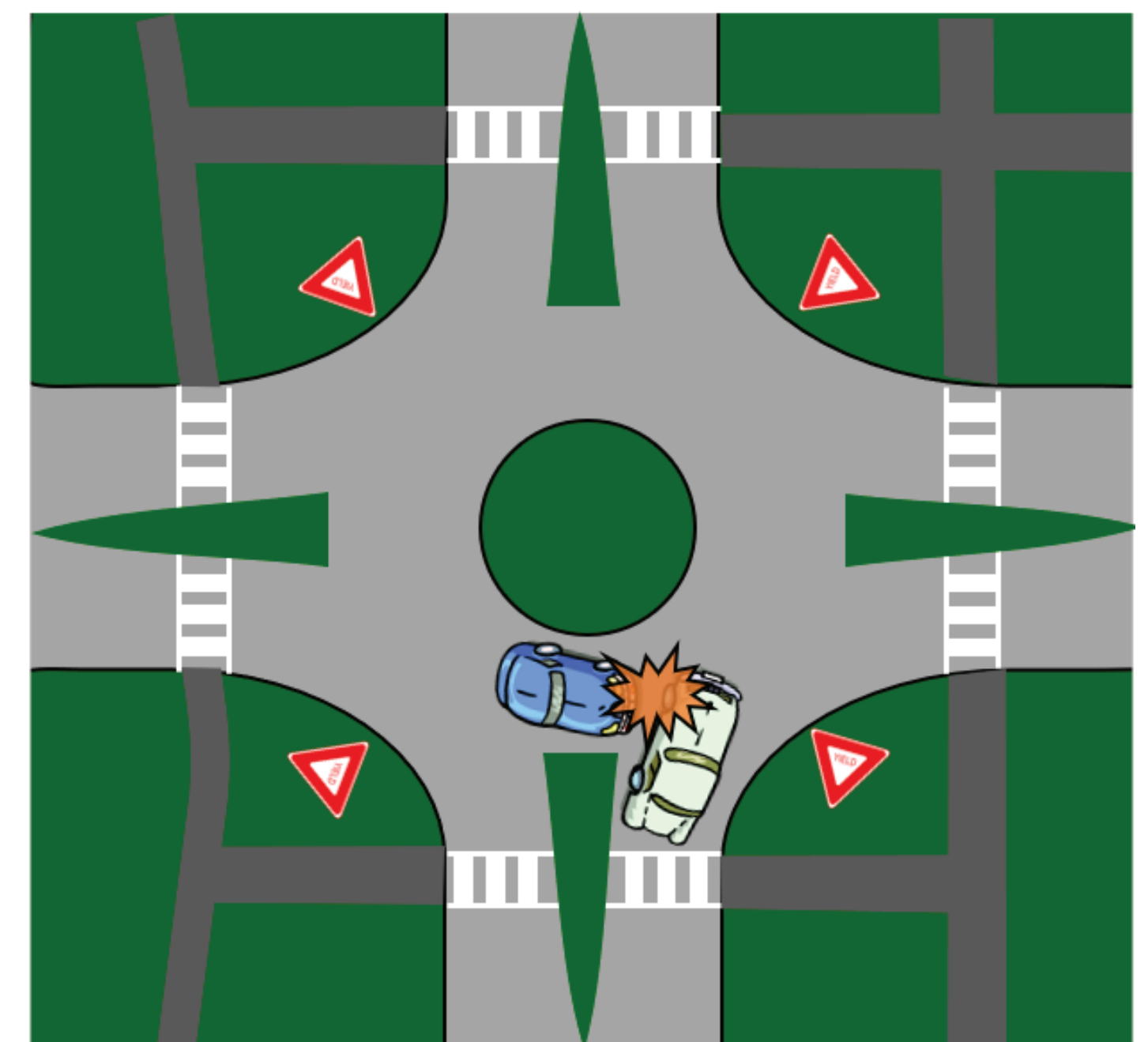
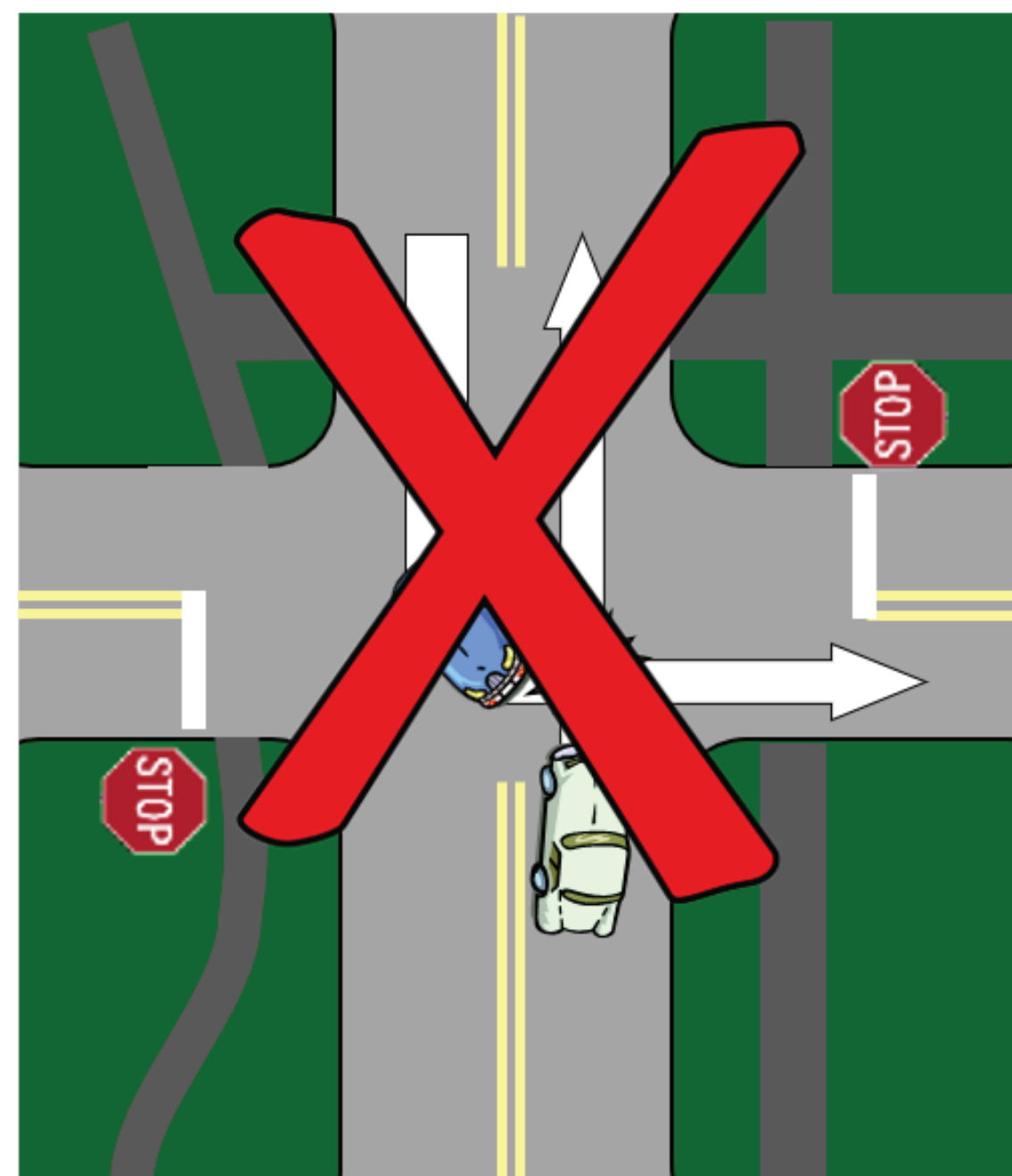
ROUNDBABOUT

90% reduction in fatal and serious injury crashes vs. stop sign and traffic signals

(Source: Insurance Institute for Highway Safety)



ELIMINATES ANGLE AND LEFT TURN CRASHES



SIDESWIPE CRASHES AT SLOWER SPEED

