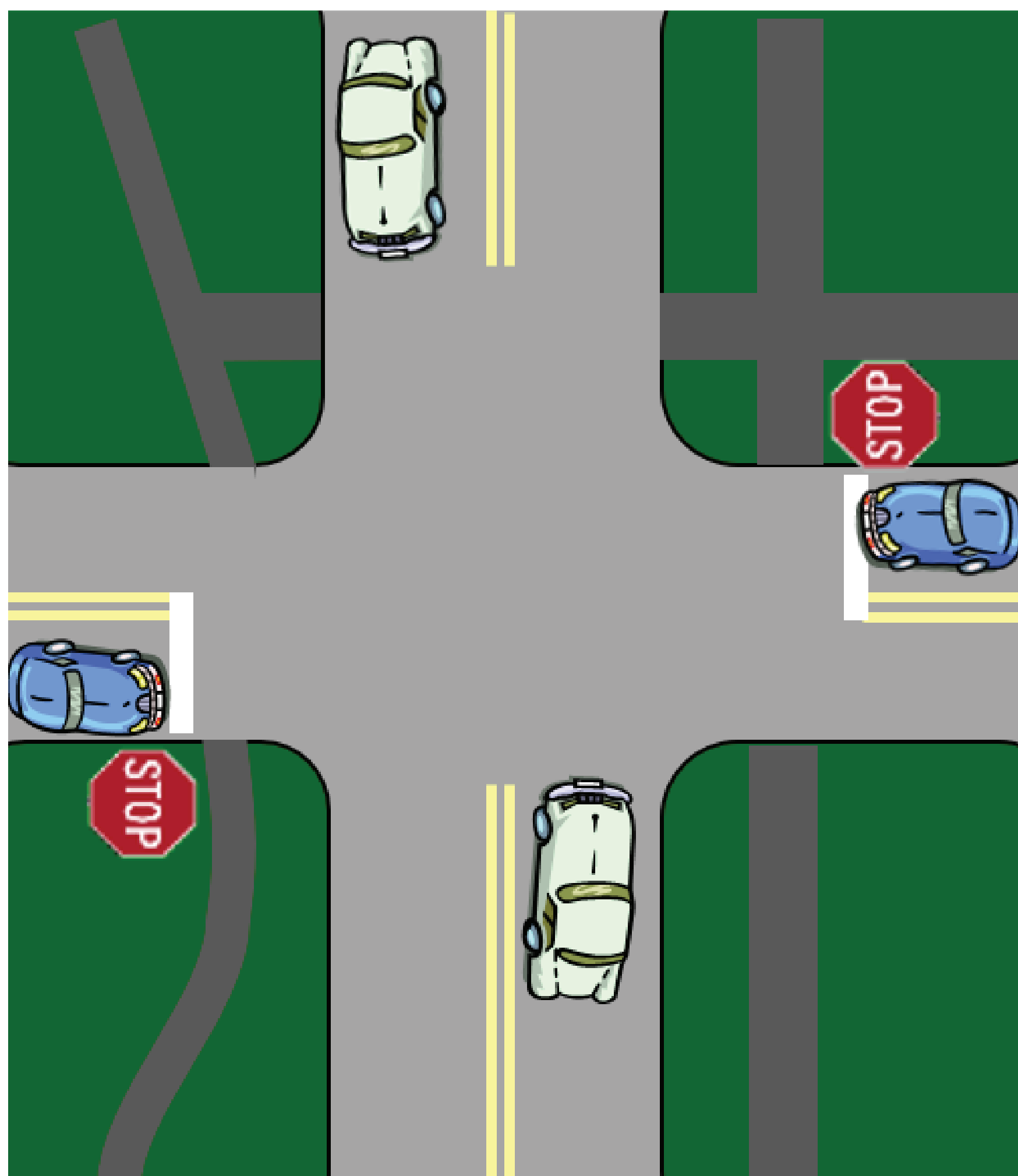
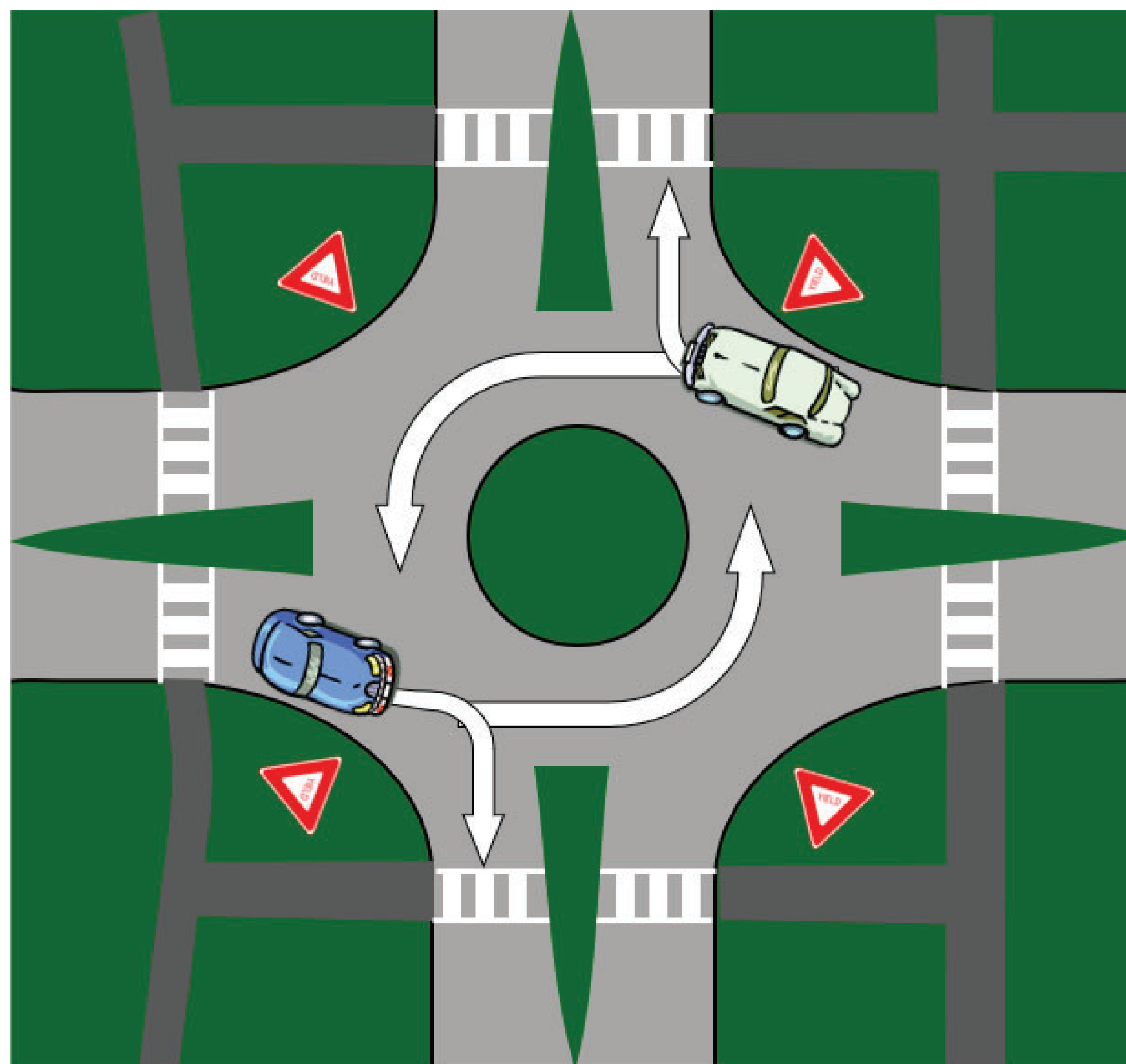


SIDE STREET ACCESS





STOP SIGN vs. ROUNDABOUT



Crossing and turning traffic must wait for gaps in traffic along Alt US 19



Sidestreet traffic may cross and turn at the same time

Expected Delay				
(time in seconds)	AM Delay		PM Delay	
	2014	2037	2014	2037
EASTBOUND				
Stop Sign - Florida Ave. 	23.9	31.5	26	36.8
Roundabout - Florida Ave. 	7.6	9.3	7.7	9.2
WESTBOUND				
Stop Sign - Florida Ave. 	21.6	26.6	28.1	36.1
Roundabout - Florida Ave. 	5.8	8.1	6.6	9.9

