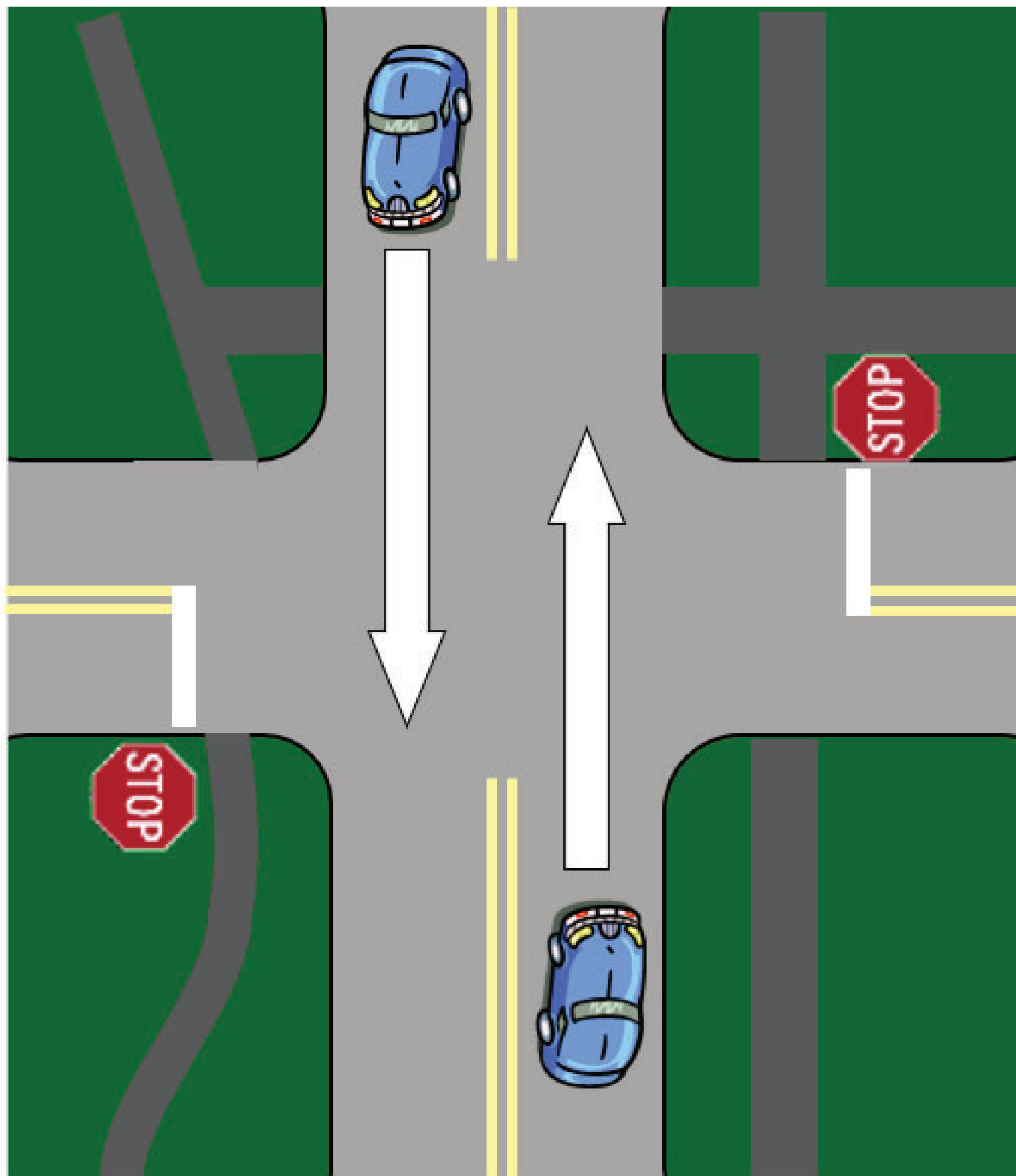


# ALT US 19 TRAFFIC FLOW

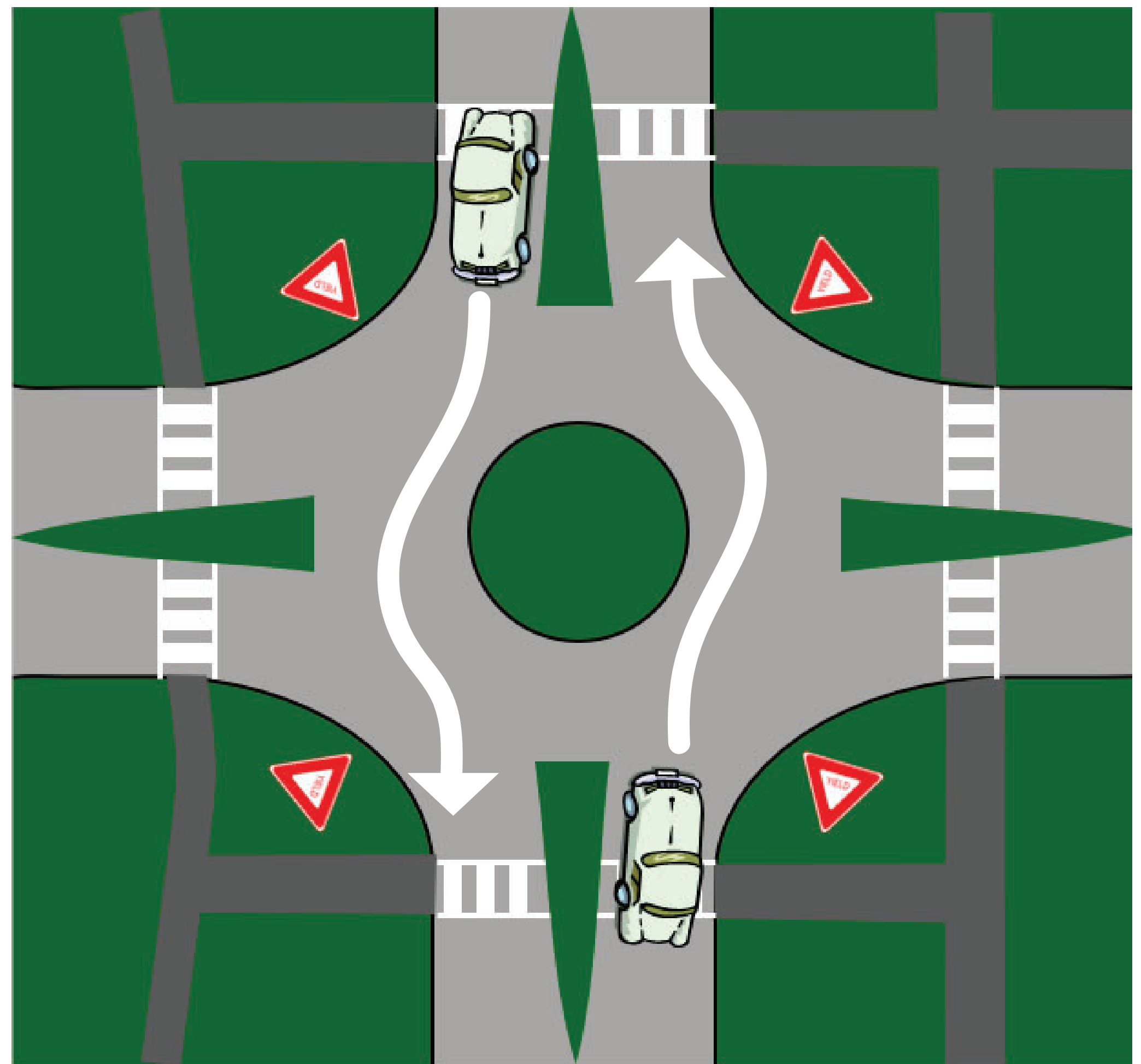


## STOP SIGNS





- Currently, no delay for traffic along Alt US 19
- This condition may contribute to speeding along Alt US 19

## ROUNDAABOUT



- No unnecessary stopping when off-peak
- No startup delay
- Enables traffic calming at all times

Expected Delay				
(time in seconds)	AM Delay		PM Delay	
	2014	2037	2014	2037
Roundabout Alt US 19 Northbound 	7.8	9.4	14.4	24.3
Roundabout Alt US 19 Southbound 	12.3	18.7	11.2	15.7

