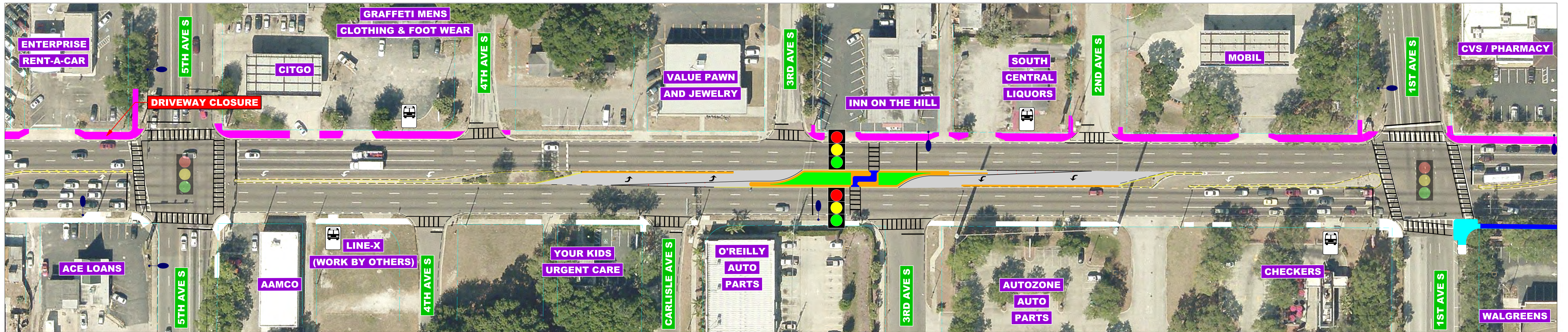
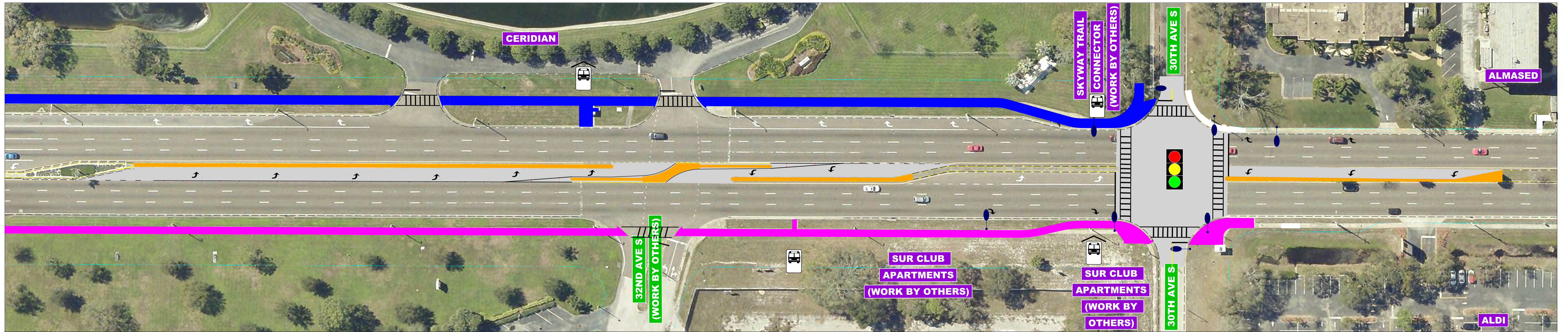


SR 55 (US 19) FROM 54TH AVE S. TO 22ND AVE N. MILLING & RESURFACING & URBAN CORRIDOR IMPROVEMENTS



- LEGEND**
- CONCRETE TRAFFIC SEPARATOR
 - 10' ADA COMPLIANT SIDEWALK
 - 8' ADA COMPLIANT SIDEWALK
 - SIDEWALK REPAIR
 - CURB EXTENSION (BULB OUT)
 - SIGNALIZED INTERSECTION (PROPOSED)
 - SIGNALIZED INTERSECTION (EXISTING)
 - PROPOSED LIGHTING UPGRADE